



a a A

a A



un arbre

un arbre

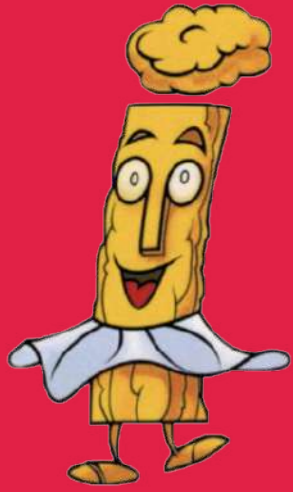


É É é É



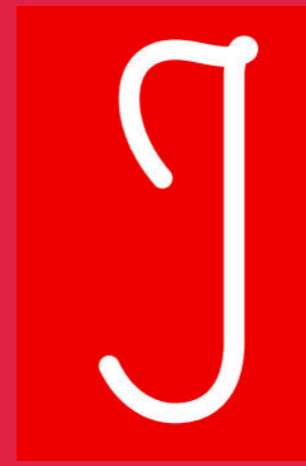
un dé

un dé



i I

i



une ile

une ile



o

O

o



une orange

une orange



u U

u U

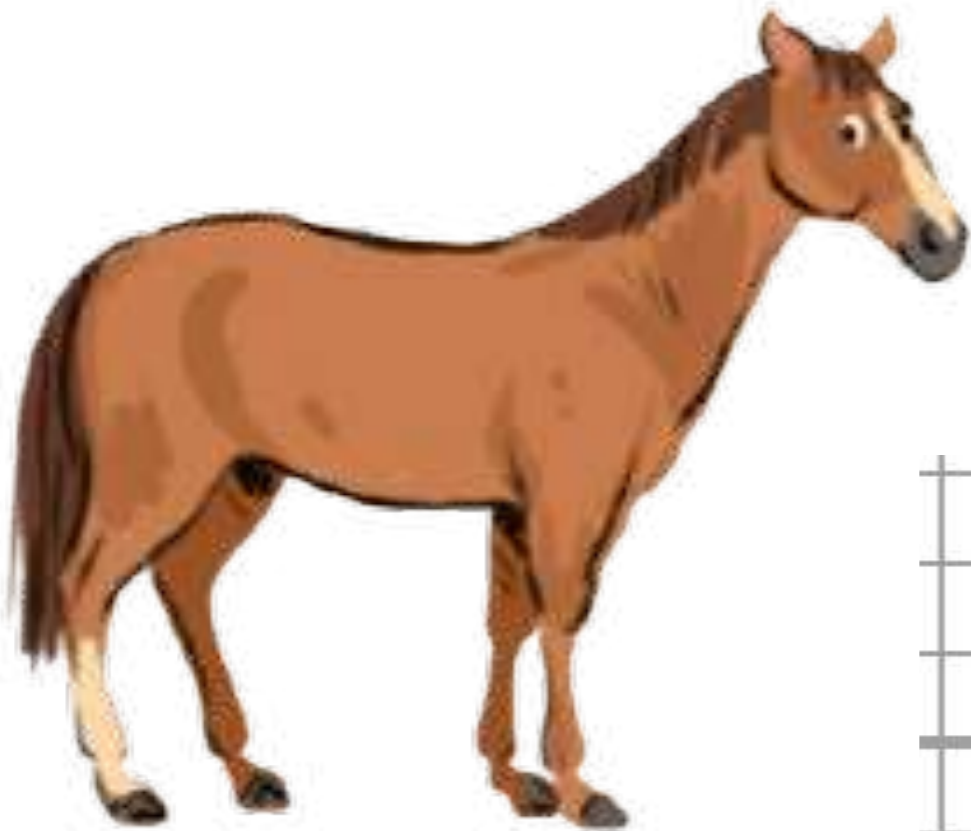


une rue

une rue

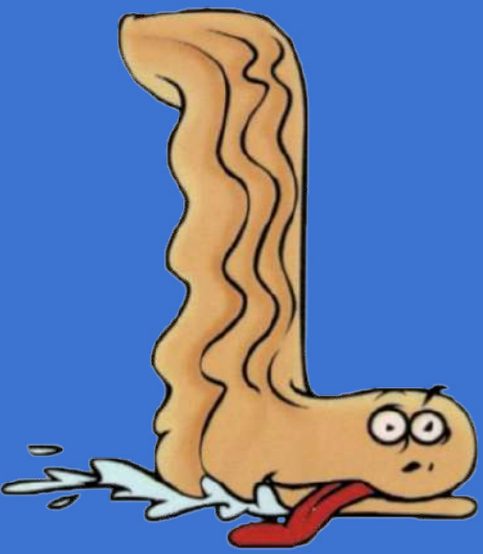


e E e



un cheval

un cheval



| L l L



Lili

Lili



r R

r R



l'ara

l'ara



f F

f F



la fée

la fée

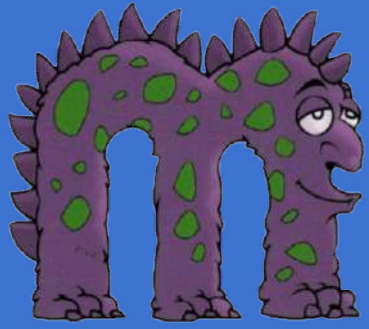


s S



le salut

le salut



m M

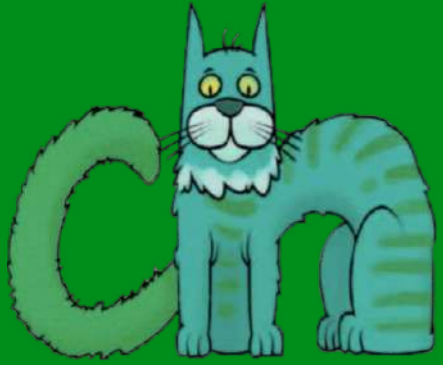
m

M



le lama

le lama



ch

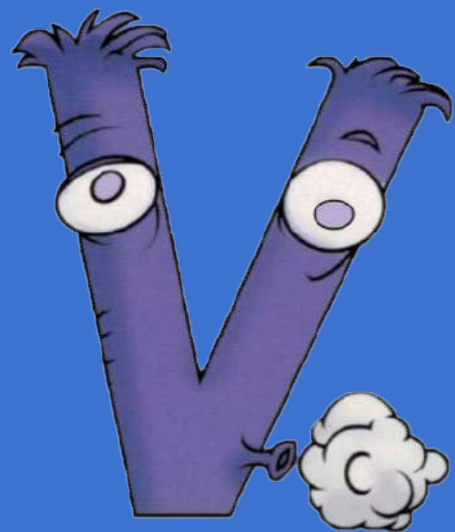
ch

Ch



le chat

le chat



v V

v V



un vélo

un vélo

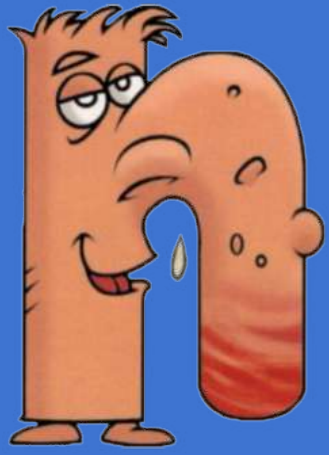


ou ou



le chou

le chou



n N

n

N



un nid

un nid



é è



une rivière



une rivière



Ê

ê



un chêne

un chêne



ë

ë



Noël

Noël



z Z

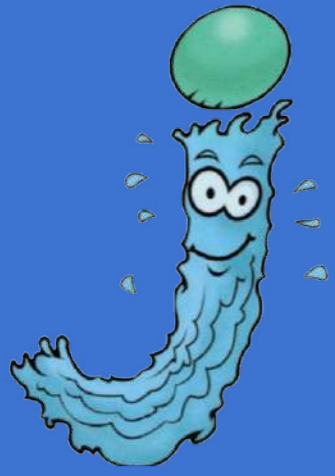
z

Z



le lézard

le lézard



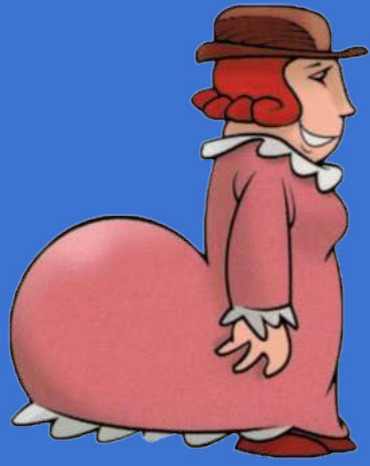
j J

j J



la joue

la joue



d D

d

D



un duo

un duo



y Y

y Y

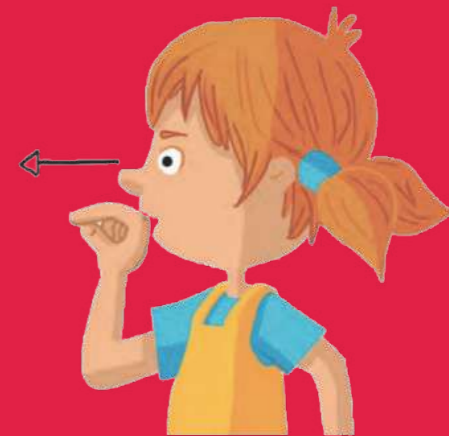


le lys

le lys

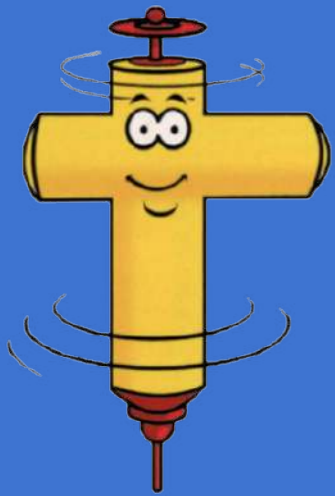


y Y y Y



le yoyo

le yoyo



t

T

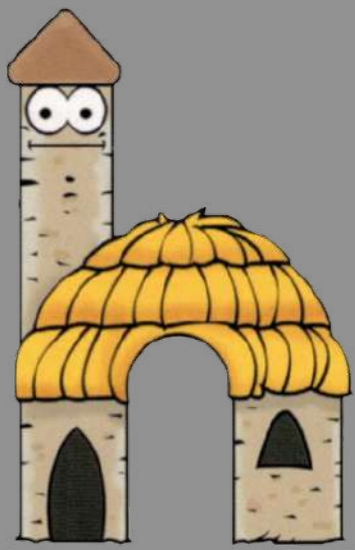
t

T



une tortue

une tortue



h H

h

H



le houx

le houx



e = è l = ò



les lunettes



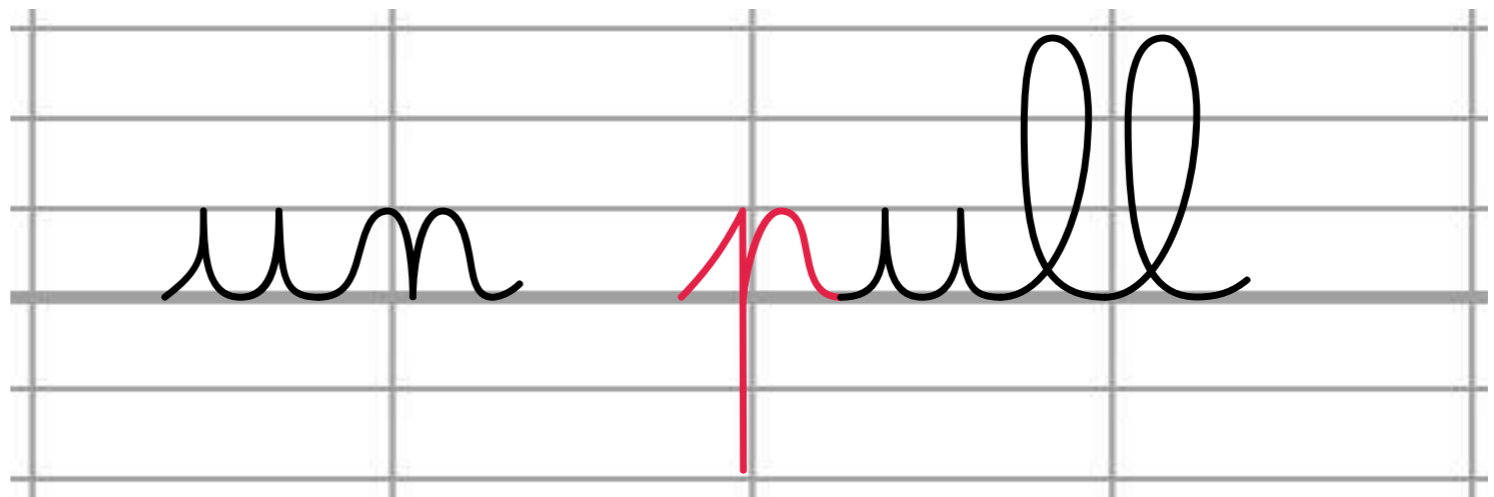
les lunettes

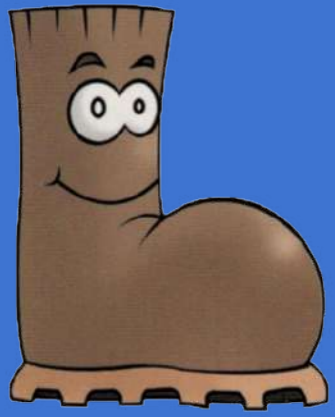


p P



un pull





b B

b

B



une bûche

une bûche



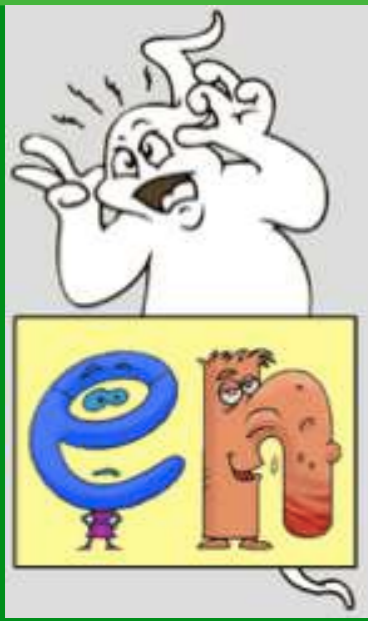
an am



la danse

la danse





en en



les par**en**ts

les par**en**ts



c

C

c

c



une c couronne

une c couronne



un un



lundi

lundi



um

um



un parfum

um parfum



g G

g G



une goutte

une goutte



gu

gu



une vague

une vague



in in



un sapin

un sapin

consonne
+ R + voyelle

br, cr, dr, fr, gr, pr,
tr, vr + voyelle



une griffe

une griffe

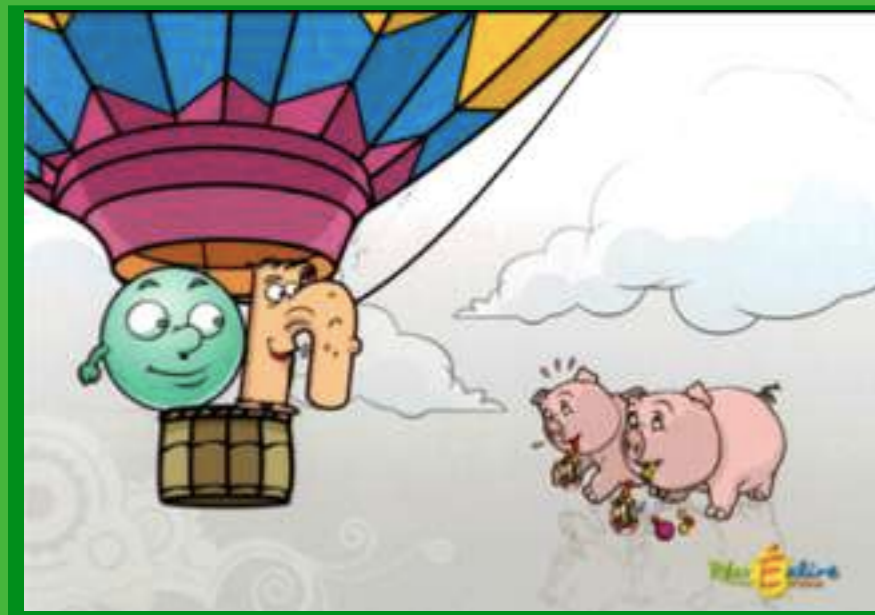
consonne
+ L + voyelle

bl, cl, fl, gl, pl +
voyelle



une flamme

une flamme

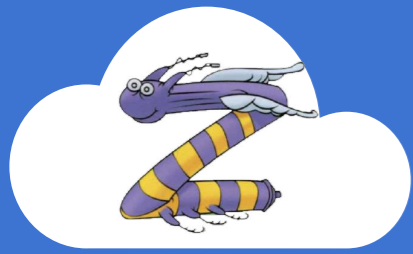


on on



un pont

un pont



s S



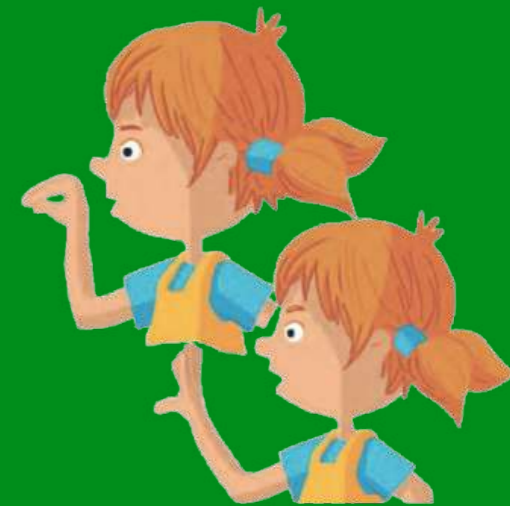
un trésor

un trésor



oi

oi



une étoile

une étoile



am am



une lampe

une lampe



em

em



la température



la température



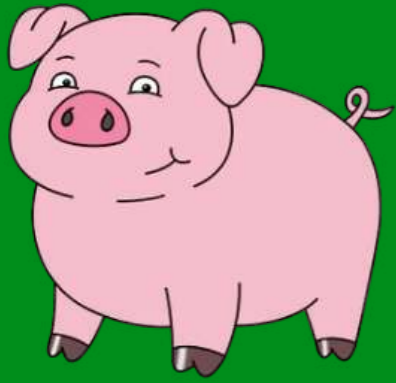
im

im



un timbre

un timbre

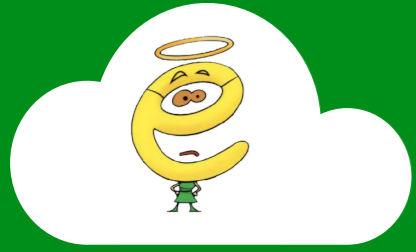


om om

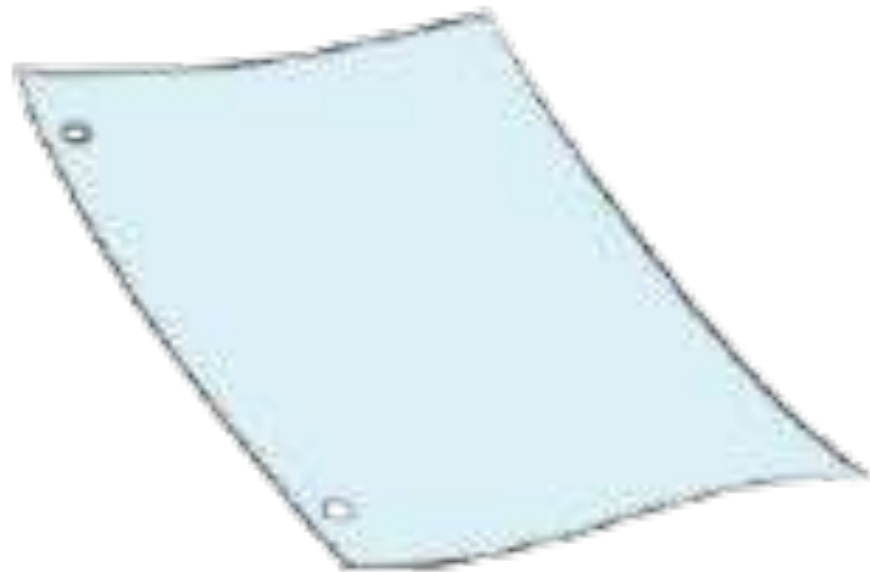


une ombre

une ombre



er er



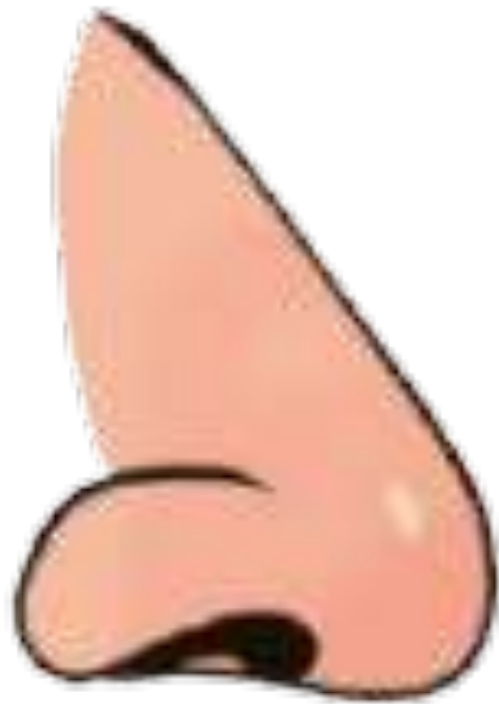
le papier

le papier



ez

ez



un nez

un nez



es

es



les amis

les amis



ai

ai



le raisin

le raisin



ei

ei



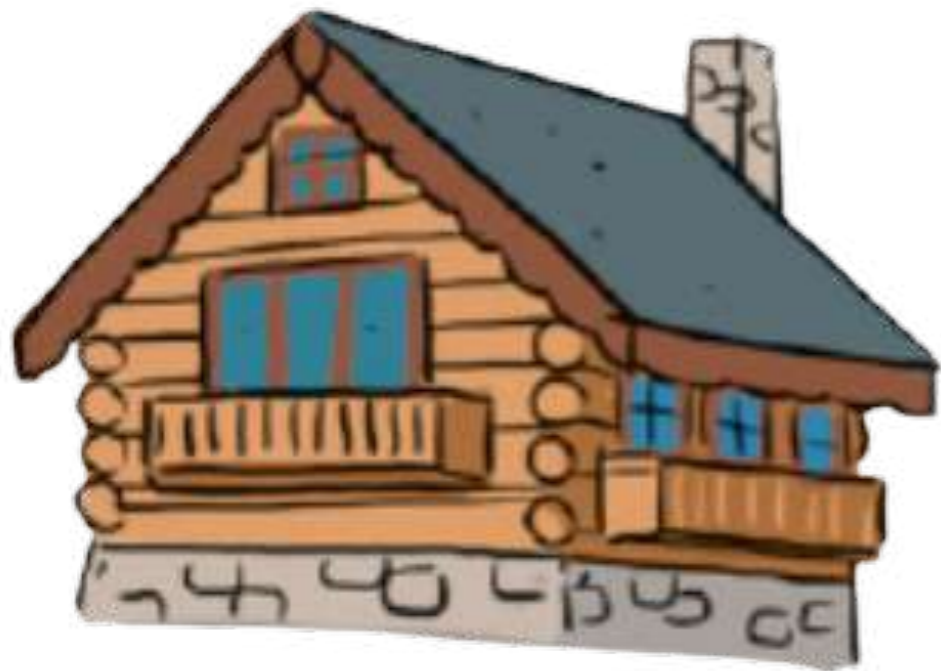
16

seize

seize



et et



un chalet

un chalet

consonne
+ r +
digraphes

br, cr, dr, fr, gr, pr, tr,
vr + digraphes



une fraise

une fraise

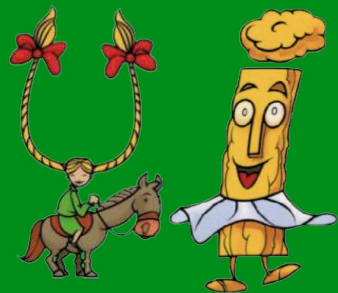
consonne
+ l +
digraphes

bl, cl, fl, gl, pl +
digraphes

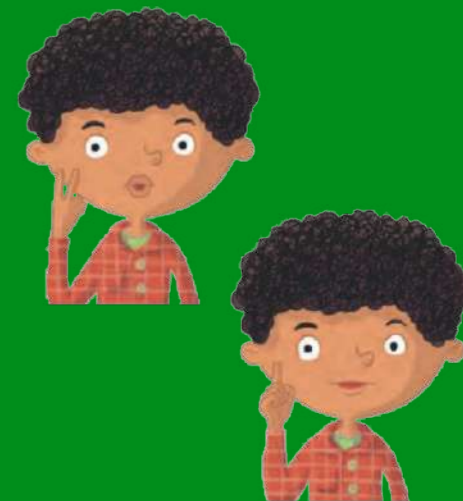


une planche

une planche

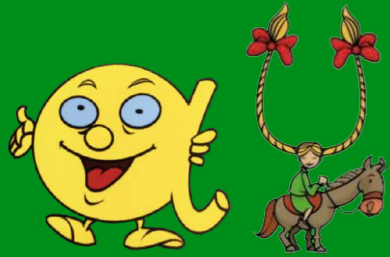
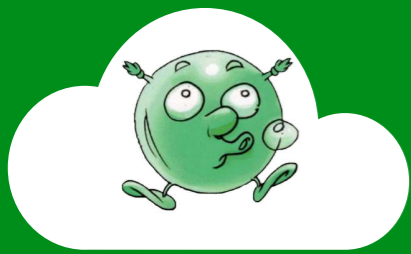


ui ui



un parapluie

un parapluie

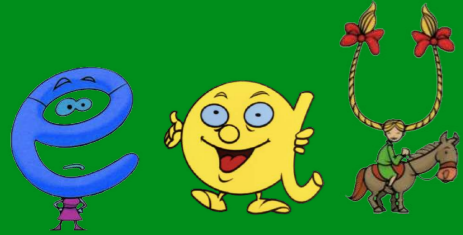
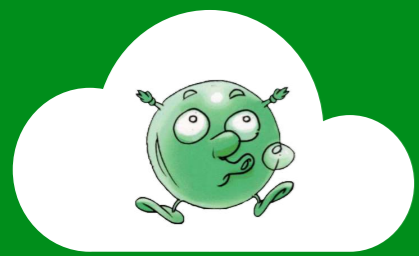


au au



jaune

jaune

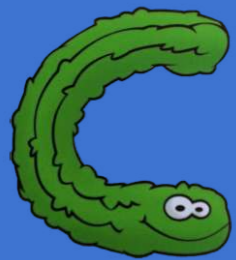


eau eau



un chameau

un chameau



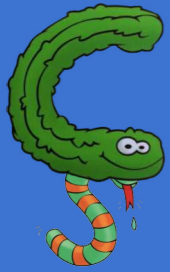
c + e-i-y

c + e-i-y



une glace

une glace



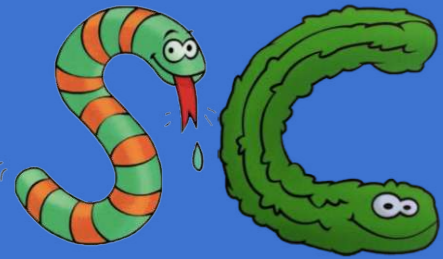
ç + a-o-u

ç + a - o - u



une balançoire

une balançoire



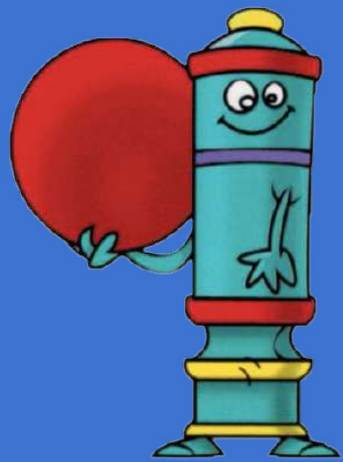
SC

sc



une piscine

une piscine



q Q

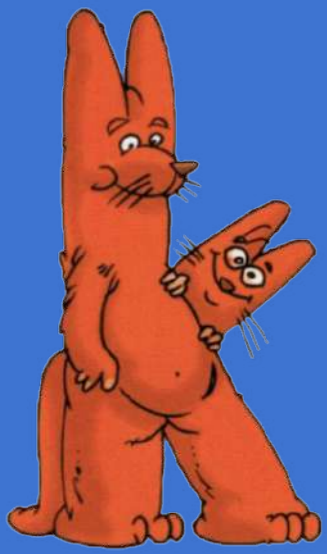
q Q



15

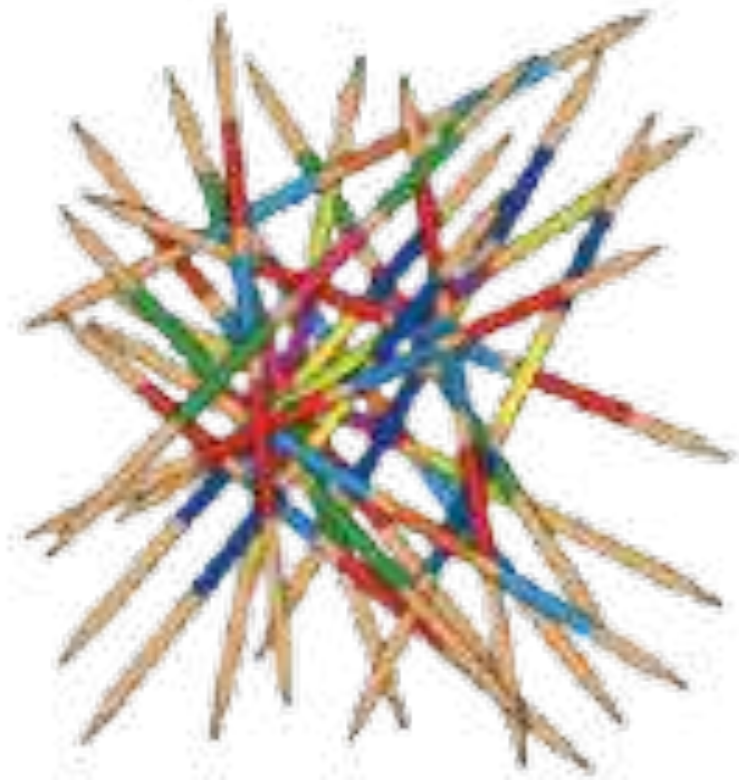
quinze

quinze



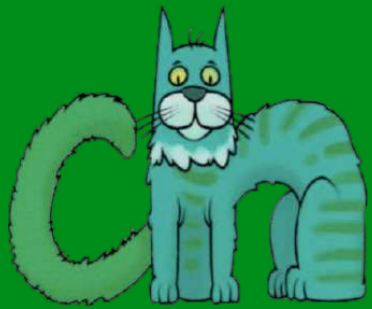
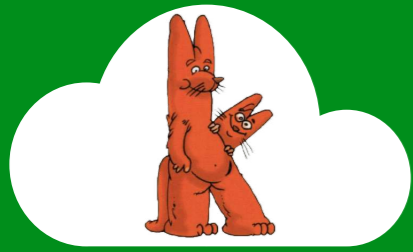
k K

k K



le mikado

le mikado



ch

ch



un chronomètre

un chronomètre



eu eu



une fleur

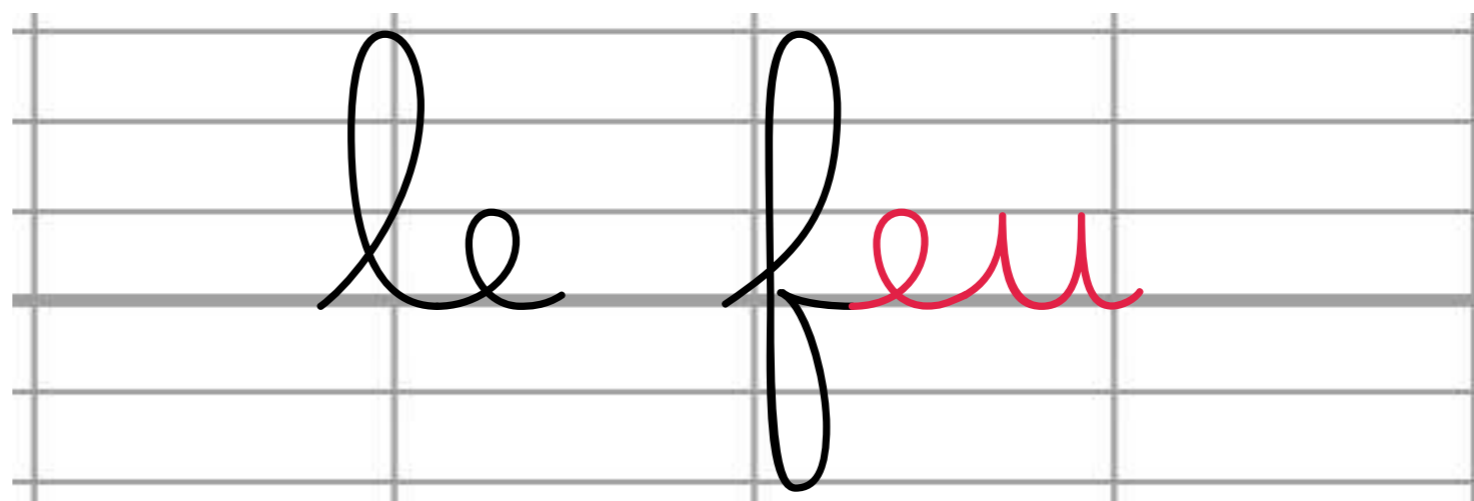
une fleur



eu eu



le feu





œu

œu



un cœur

un cœur



œu

œu



un nœud



un nœud

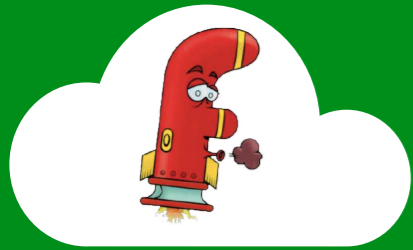


ge ge



un nuage

un nuage



ph

ph



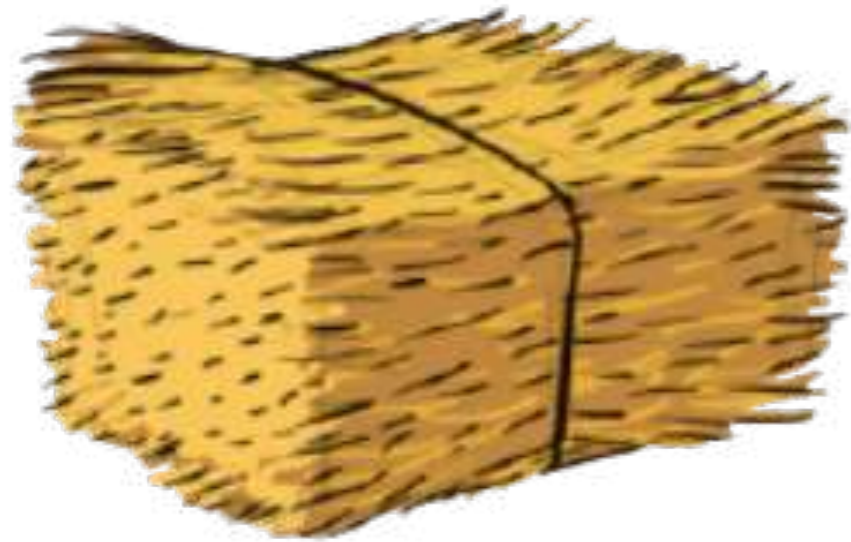
un dauphin

un dauphin



oin

oin



le foin

le foin



ain

ain



la main

la main



aim aim

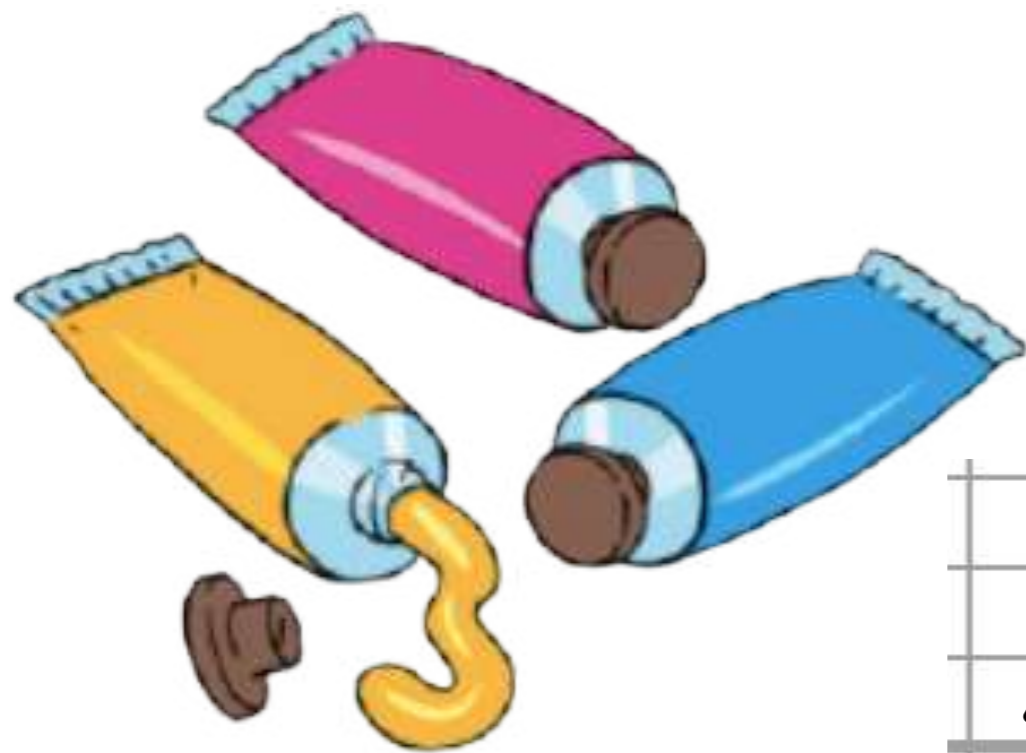


la faim

la faim



ein ein



la peinture

la peinture



ym

ym



le thym

le thym



gn

gn



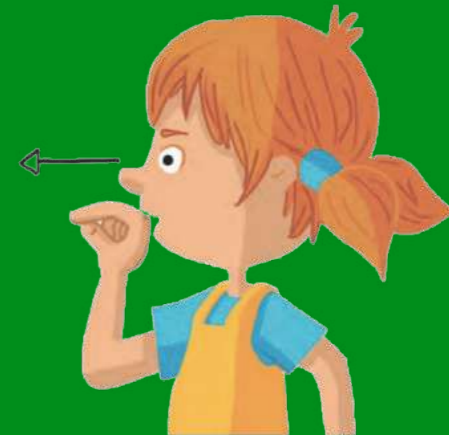
un champignon

un champignon

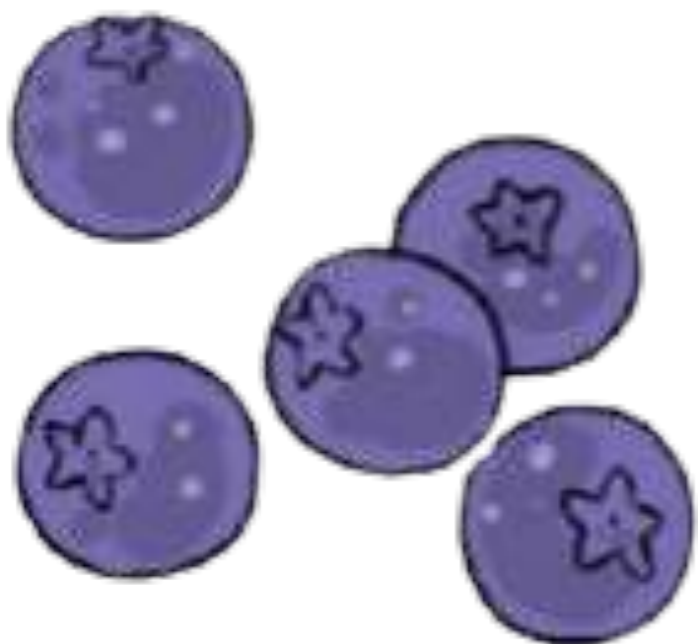


ill

ill



des myrtilles

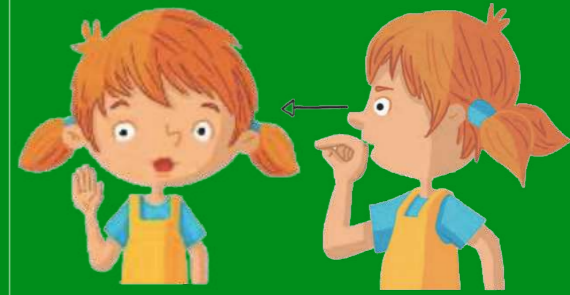


des myrtilles



ail

ail

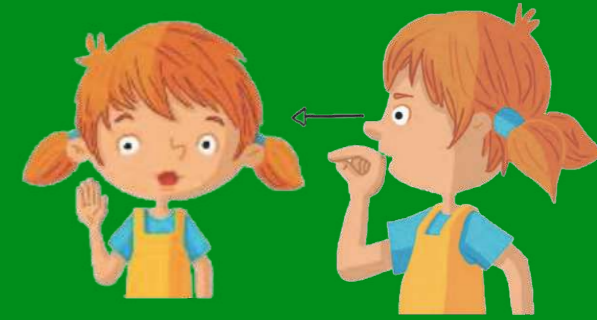


le corail

le corail



aille aille

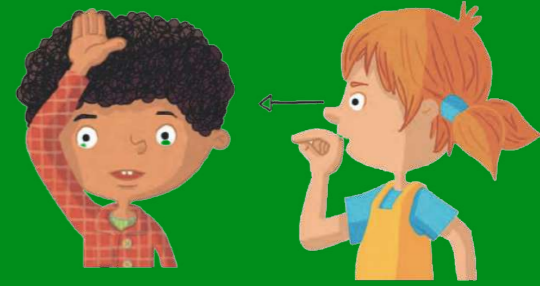


une muraille

une muraille



eil eil

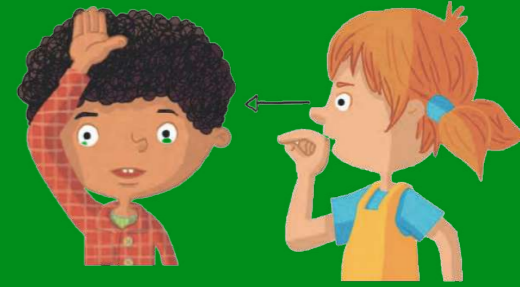


le soleil

le soleil



eille eille

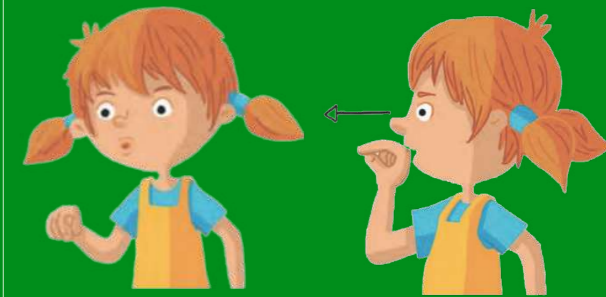


une oreille

une oreille



euill euille

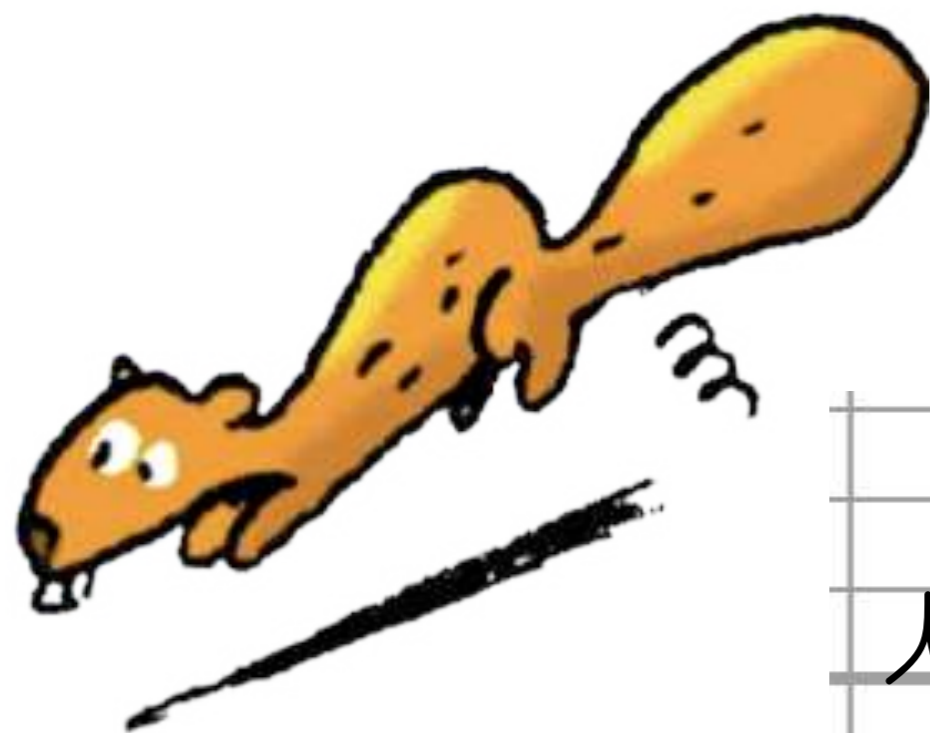
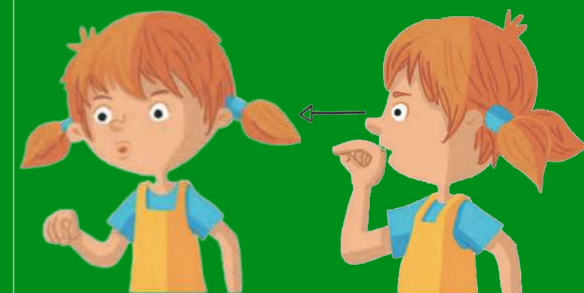


une feuille

une feuille



euil euil

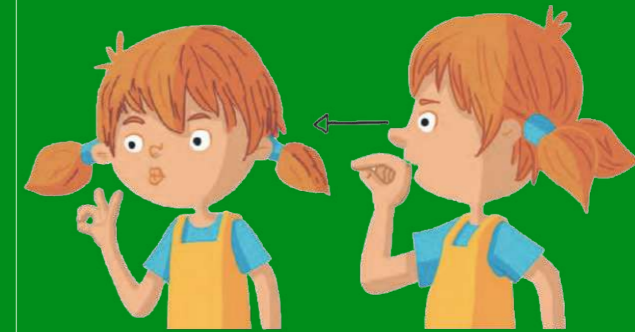


un écureuil

un écureuil



ouil ouil

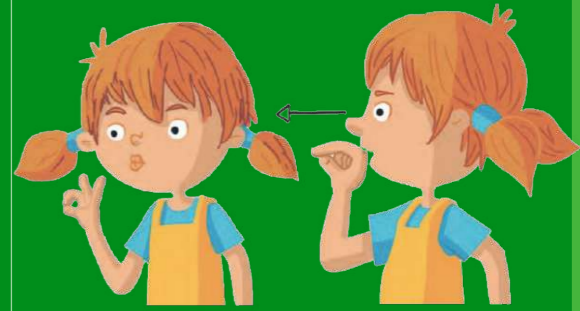


fenouil

fenouil



ouille ouille

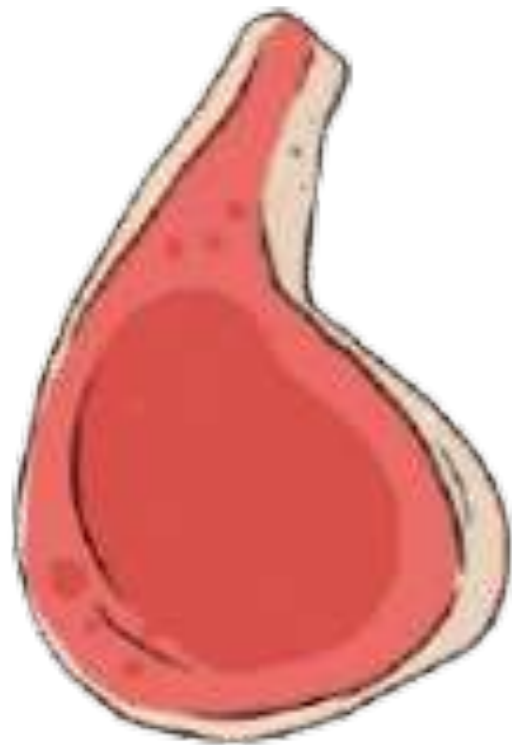


une citrouille

une citrouille



ian iam



une viande

une viande



ien ien



un chien

un chien



ieu

ieu



le milieu



le milieu



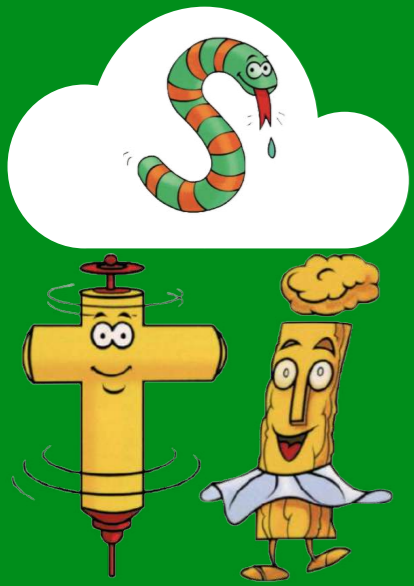
ion

ion



un lion

un lion



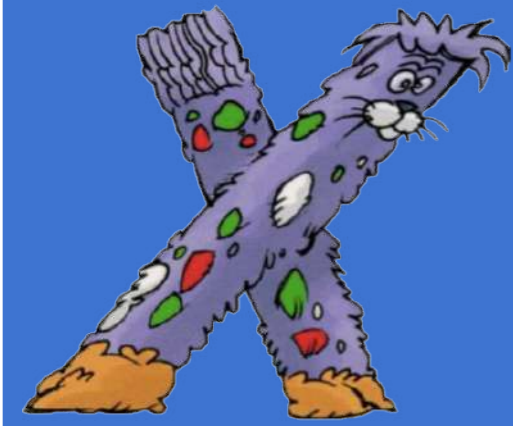
ti ti



$$\begin{array}{r} 5 \\ + 5 \\ \hline = 10 \end{array}$$

une addition

une addition



x X

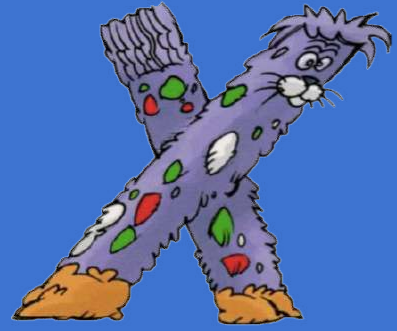
x

x



un taxi

un taxi



x X

x

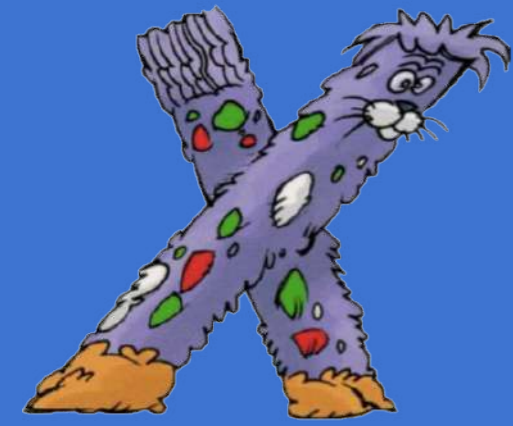
x



6

six

six



x X

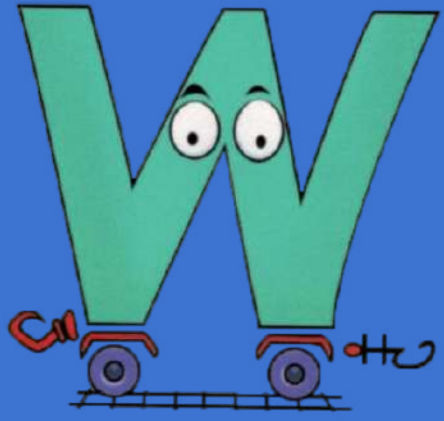
x

x



un x ylophone

un x ylophone



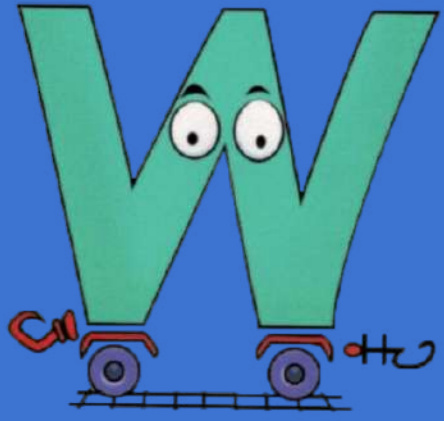
w W

w W

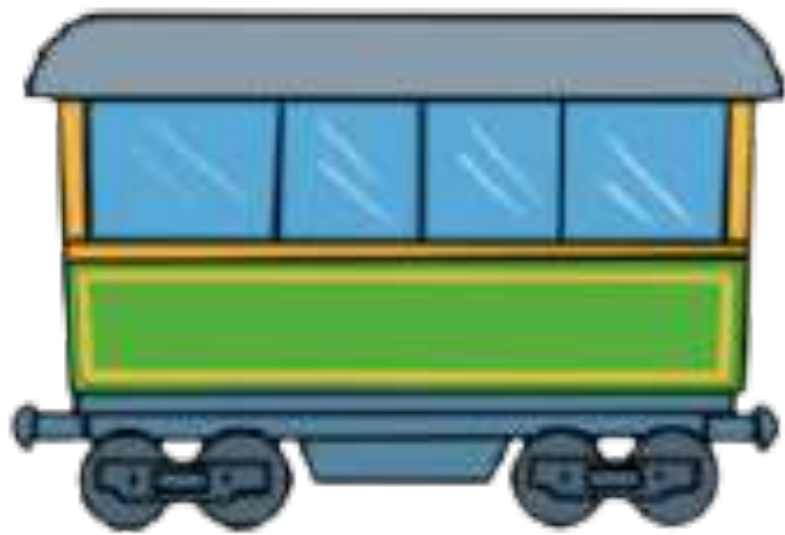


un kiwi

un kiwi



w W w W



un wagon

un wagon